

Bad Landfill Practice

- Methane created
- Mixed waste
- Loachate released
- Little or no Opportunity to Recycle and Recover Materials
- Mixed waste
- Hazardous waste
- Mixed waste
- Hazardous waste
- And Contamination

PLANT ROOMS

POSSIBLE GLASS ROOFING

SCREEN FOR LECTURES

LEARNING CLASSROOMS

OBSERVING WORKSHOP ACTIVITY

RAISED FLOOR

STRUCTURAL FLOOR

EXPOSED CONCRETE

MEETING ROOMS

OFFICE

FOOD

DRINK

LEARNING

RAISED DOORS

INSULATED DOORS

GREEN ROOFING

FOUNDATIONS

440

200

70

300

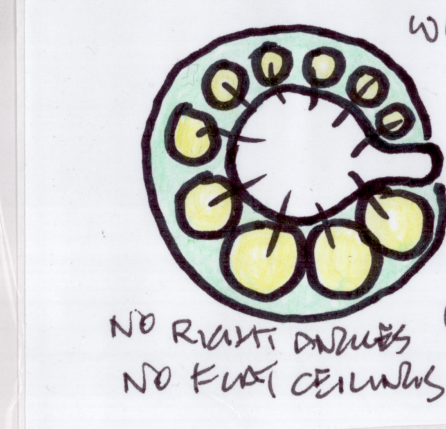
73.4%



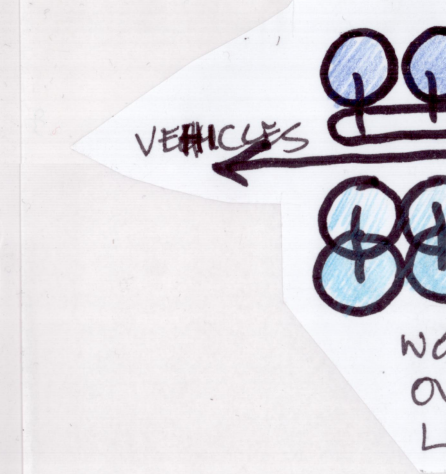
BUILDINGS

ACCOMMODATION

NURTURING



LEARNING OBSERVING WORKSHOPS



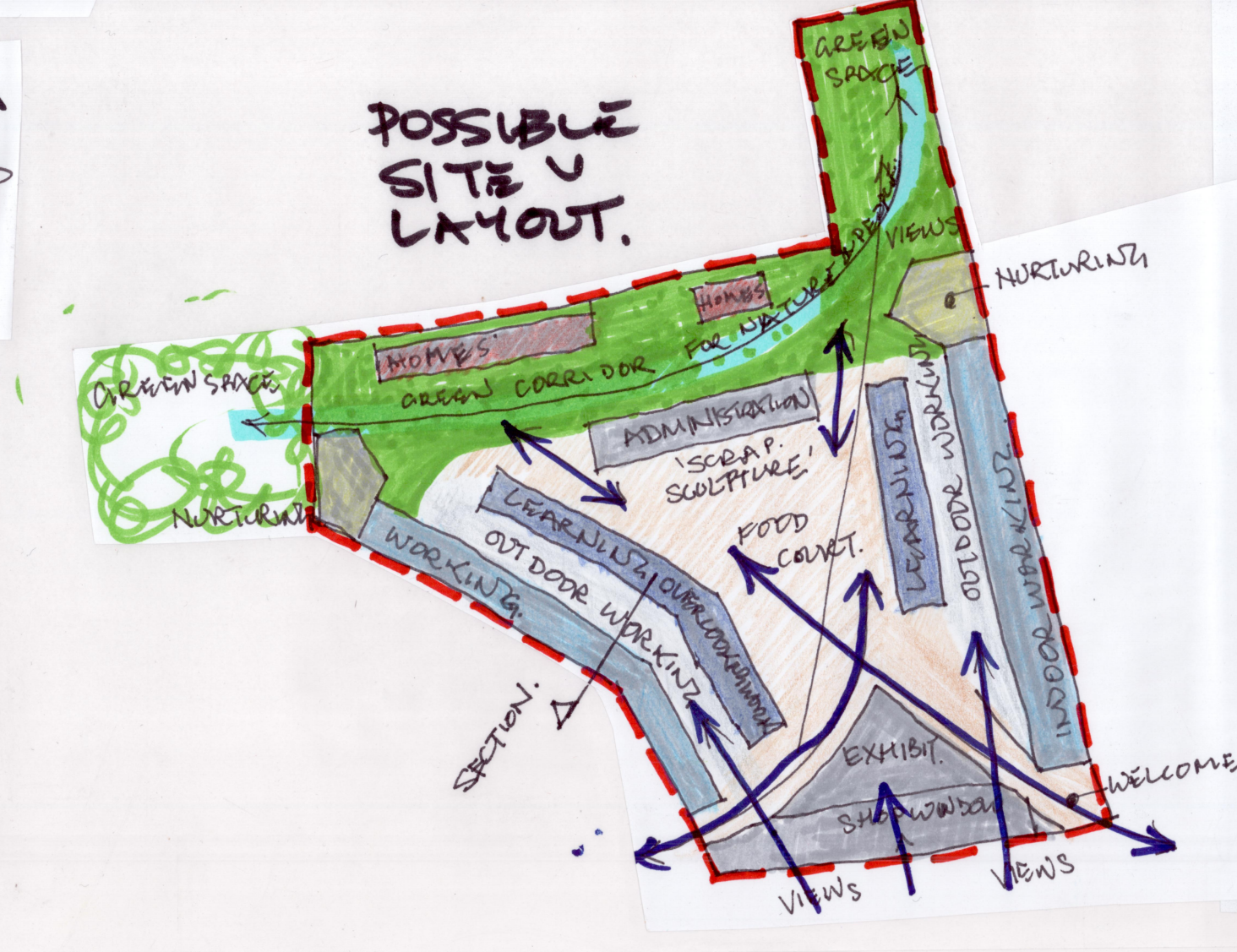
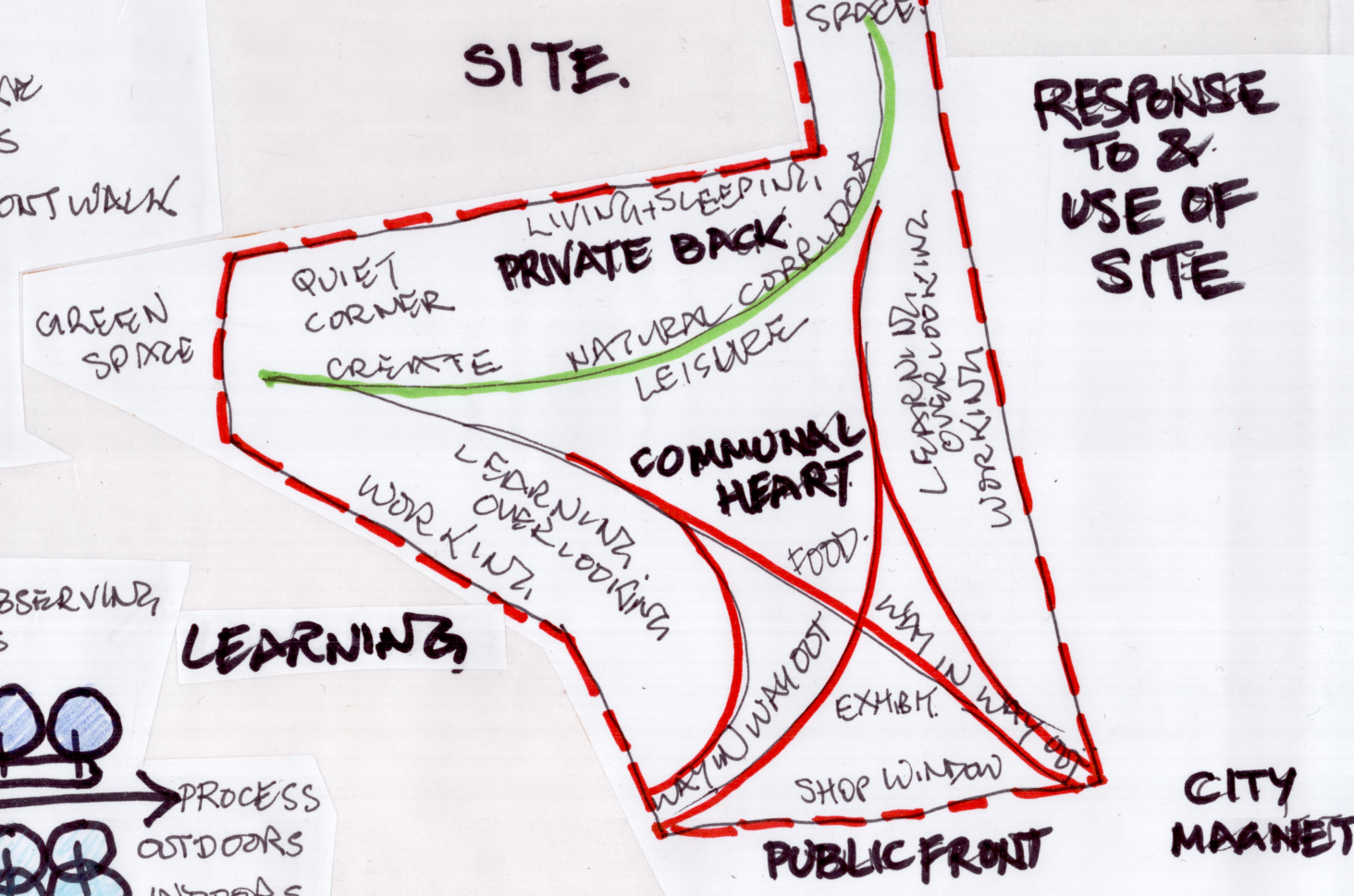
LIVING



COOPERATIVE SOCIAL HOUSING MODEL



INDEPENDENT LIVING MODEL



RESPONSE TO SITE & CONTEXT

- Base on an A4 Black and White aerial photograph of the site in context and no further information
- ASSUMPTIONS:**
- Based on sun shadows (but not time reference) the site may have the main road to the south +/- 90 degrees
 - Based on the size of cars and other vehicles
 - frontage to the main road is about 60 m
 - depth of the bulk of the site is 100 m
 - Prevailing wind assumed to be from south west.

SITE BOUNDARIES & CONTEXT:

- East: Secondary road and business premises beyond
- South: Main road to town centre (direction east or west unknown, assume east)
 - residential or commercial premises opposite, demolished building site opposite
- South west: tertiary road currently not in use buried under car parking, commercial premises opposite
- West: green space with mature trees
- North west: Industrial site, secondary road and industrial site opposite
- North east: Private house, Office or Public house and mature garden with mature trees
- Adjacent buildings assumed to be 2-3 domestic or commercial storeys or single storey industrial
- Many adjacent spaces are currently used for site level car parking
- Solar access is good to the east, south and some interruption on the south west.
- Mature deciduous trees to west and north east

RESPONSE TO CONTEXT

- Public front to south
- A shop window for the public to see the activity of the Apprentice Centre
 - An entrance to the site with access to central communal space and activities
- Communal heart
- Opportunity to invite public in to meet Apprentices & for Apprentices to meet business & public
 - Food and drink are a common requirement for all and one route to community activity
 - Routes from backs, paths cross the communal heart, drawn to the public front and the city centre
 - Alternative routes through the site can provide confrontation avoidance routes
- Private backs to north
- Quiet backs for rest and relaxation: Allotment, communal garden and communal composting
 - Homes away from traffic noise
 - Green Spaces to east and west
 - Link east to west to reinforce the green corridor for biodiversity and residents alike
 - Provide picnic space, outdoor sun bathing, communal garden, allotments, composting, sculpture park
 - Water running through with wild ponds, natural swimming ponds and reed beds.

BUILDINGS & SPACES

- Residential spaces**
- Mixture of accommodation to suit the apprentices capability related to independence
 - Sheltered housing model for high dependency on support
 - Co-operative Social Housing model for less dependency
 - Independent living for ready to move back into society
- Nurturing and People Recycling**
- Womb like spaces to cradle individuals, avoiding square corners and flat ceilings
 - Avoid hard and noisy spaces
 - Many size spaces for different size groups for 'talk don't walk' sessions
- Workshop space**
- Single storey one room spaces at perimeter of the site
 - Flush threshold and sliding door to external working space
 - Equipment on fork-lift base or drop down wheels, permitting outdoor working
- Training and Workshop space**
- Upper floor training rooms/meeting rooms, balcony overlooking the workshop spaces
 - Observation and critique of practical work related to theory
 - Weather sheltering eaves
- Food and Drink**
- Communal food and drink for all meals of the day for those that need it
 - A place for the public to be welcomed in, for the public to be 'trained to accept' the Apprentices
- Administration**
- Office spaces, meeting rooms/training rooms.

DIFFERENT ACTIVITIES, DIFFERENT PLACES & DIFFERENT BUILDINGS:

- The proposed buildings are likely to contain housing, recreation spaces, training facilities with numerous supporting activities.
- The housing may need to be offered many types for experience as the individuals grow in their capability:
- fully supported sheltered accommodation
 - cooperative social housing
 - independent living
- For every one of the supporting activities there is an opportunity for another training programme and Apprentice scheme as the Centre develops
- Food, drink, café, restaurant
 - Office administration
 - Facilities management
 - Estate maintenance

SPECIAL PLACES TO CATCH UP ON LIFE THAT PASSED YOU BY

- A place where all manners of experiential deprivation can be put to right:
- The recreation, learning, interaction and sharing spaces may be as diverse as:
- outdoor relaxation space
 - formal team sport fields, pitches or courts, multi-functional spaces, kick-about spaces
 - a beach or sandpit
 - allotments or garden
 - a pond, stream, waterfall or fountain
 - outdoor covered cinema/theatre/music amphitheatre
 - gallery/landscape for art/sculpture
 - shop, food, drink, café, restaurant, picnic space

SEPARATE ACTIVITIES

- Living over the shop (LOTS) is not a desirable arrangement, the act of preparing for a days work, working to a timetable, securing and leaving the home space and travelling to work, even if it is only 100 meters, are important transitions that prepare the Apprentice for the world of real employment.
- Finishing a normal day's work to travel home and then having time for a full and rich social life is equally important to personal development, the social life can be a mixture of site based activity with peers and can extend to trips to the nearby town centre, supervised or chaperoned as necessary.

INDOOR/OUTDOOR SPACES:

- The premises probably does not want to be a large industrial shed without window and access to sunlight, fresh air; with pockets of activity scattered around the large floor plate, but probably smaller spaces with defined activities.
- Indoor work spaces and outdoor workspace related to each other and connected by sliding doors and flush thresholds so one can facilitate the other.
- Spaces need to include, relate to and mimic construction sites, both inside and outside conditions so there are no surprises on building sites.

RECYCLED AND/OR GREEN BUILDING AND STREET FURNITURE:

- These could be designed to maximise the exposure of materials with recycled content to show the remainder of a 'closed loop' after the segregation and recycling.
- The nature of the activities could embrace and allow:
- Apprentices to become 'Recycling Champions' and 'Green Champions' for materials:
 - Reclaimed for Reuse
 - Segregated for Recycling materials
 - Green materials
 - Energy and water saving services
- they could include:
- an exhibition building or space
 - made of and exhibiting materials with recycled content,
 - supplied free by the manufacturers
 - promoted to the local construction sector.
- The products used and exhibited could and should include products with other environmental or green characteristics.

BRIEF FOR THE IMAGE

- It could show attractive buildings, set in an attractive landscape, a residential and learning environment with leisure space and activities.
- Showing a design of a building that has not come from a briefing and design process is akin to 'speculative developer' approach to selling land with buildings for short term profit with no interest in the long term impact on the users.
- If it shows anything it needs to show the Apprentices and their activities at eye level and show how many activities relate to each other and how the people interact with each other to form a coherent whole of interdependence and mutual support.
- The image needs to show the site its surrounding context and the proposed buildings and its activities
- The image does not want to show the buildings as an aerial view, 'letting agent style' showing how big the industrial units are, but if it shows an aerial view it can focus on the grouping of the buildings, the places created between them, the activities in each of the spaces, their relationships and the relationship of the inside and outside spaces.
- Lots of places to sit and 'talk, don't walk' in many different size groups and different context.
- No 'cotton wool' because the mild irritations need to be confronted to help prepare to cope with life's challenges.

TEXT AND THUMBNAIL IMAGES IN THE MAIN ILLUSTRATION:

- To show the viewer and potential participants/funder the breadth of offering to see that the project has great potential is worthwhile for investing their own CSR time, effort and money into.
- The text can include bullet points about the things that the Construction Industry is not good at and that the Apprentices could bring to their future employers:

TEACHING THEORY IN PRACTICAL WORKSHOPS

- Site Waste Management Plans workshops
- Site layout for waste separation, materials storage, lorry access
- Waste identification, coding and completion
 - Waste Transfer Notes, Packaging Return Note & Hazardous Waste Notes
 - Waste Champion's role
 - Waste Tool box talks and dissemination activity

SCOPE

- Waste Hierarchy
- Waste types from inert to hazardous and segregation regimes
- Construction, Alteration and Demolition soft strip and waste
- Excavation and landscape arisings and reuse
- WEEE waste and its infrastructure
- Packaging waste
- Waste minimisation activity
- Waste segregation & management methods

PRACTICAL

- Waste equipment:
 - bin, 2 and 4 wheel buckets, sack and skip types, lids locks and apertures.
 - Vehicle types: Roll On R Off, Front End Loader, Rear E L, Skip Luger, Compactors,
 - Static compactors, materials bulk reducers, balers,
 - sack holders, cutters, conveyors, chutes, etc.
- Waste container separation colour coding and labelling
- Waste monitoring methods, checklist records and software

OUTREACH TO INDUSTRY

- Engaging with resource efficiency agencies
- Development of supply and demand chain partners for materials and recycle resale
- Web surfing for materials exchange, construction reclaim, architectural salvage, sites & businesses
- Skills passport
- Job opportunities, activities, roles and responsibilities
- Interview techniques and practice