

Lecture: Future Systems: ITC (CAD BIM APPS)

Advanced Technology
 Module Leader: Ilona Hay
 Module Coordinator: Kenny Fitzmaurice
 Technology Campion: Brian Murphy

Lecturer: Brian Murphy

Created: 16th 18th March 2019
 Presented: 19th March 2019
 Updated:

>40 years into 1 Hour won't go

- So I am providing links to other information if you want to know more
 - I offer you the doors, you open them and see where it takes you
- Question Everything
 - Use what you know, join up your thinking, keep learning and refining what you know
- Don't assume that I know everything
 - (I know a lot but not everything)
- Don't assume I have cherry picked the best bits
 - (new stuff keeps appearing)
- Don't assume what your being told is the whole story
 - Some will hide what they don't want you to know
 - And tell greenwash porkies
- Do your best with what you know
 - When you know better
 - Do better

18/03/19

2

This Presentation on GBE:

- Find this file on GBE website at:
- <https://GreenBuildingEncyclopaedia.uk/?P=20897>
- Find related image folders on Pinterest
- <https://www.pinterest.co.uk/bmurphy1390/BIM>
- Schedule of related pages:
- <https://GreenBuildingEncyclopaedia.uk/?P=17699>

18/03/19

© GBE NGS ASWS 2019 Design & Detailing to Perform

3

BIM on GBE 1 of 2

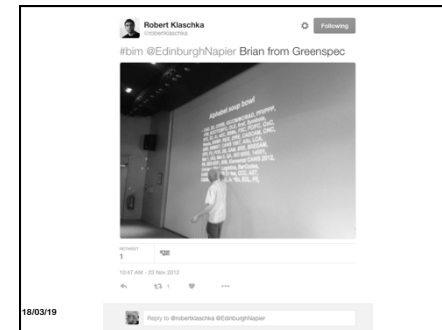
- BIM Jargon Buster Theme
- <https://greenbuildingencyclopaedia.uk/?p=1409>
- BIM Periodic Table
- <https://greenbuildingencyclopaedia.uk/?p=12691>
- Communicating Product Data BIM4M2
- <https://greenbuildingencyclopaedia.uk/?p=11309>
- Sustainable Design & Manufacturer's Information
- <https://greenbuildingencyclopaedia.uk/?p=2046>
- Specifications within BIM
- <https://greenbuildingencyclopaedia.uk/?p=4394>
- Whole Building Calculators
- <https://greenbuildingencyclopaedia.uk/?p=600>



Another GBE CPD/Lecture to download
 And <https://greenbuildingencyclopaedia.uk>

18/03/19

5



18/03/19

6



Another GBE CPD/Lecture to download
 And <https://greenbuildingencyclopaedia.uk>

18/03/19

7

BIM on GBE 2 of 2

- Specification Development RIBA Plan of Work 2013
- <https://greenbuildingencyclopaedia.uk/?p=1339>
- National BIM Report 2013
- <https://greenbuildingencyclopaedia.uk/?p=1003>
- Product Data Templates (PDT)
- <https://greenbuildingencyclopaedia.uk/?p=8097>
- Digital Object Identifiers (DOI)
- <https://greenbuildingencyclopaedia.uk/?p=7314>
- Green BIM Building Conference Leeds
- <https://greenbuildingencyclopaedia.uk/?p=1867>
- Blockchain Timber Chain of Custody
- <https://greenbuildingencyclopaedia.uk/?p=20312>
- EUTR EU Timber Regulations NEPCon Hub
- <https://greenbuildingencyclopaedia.uk/?p=16016>

UoFH Part 1 Year 2 Schedule

GBE

Green Building Encyclopaedia
<https://greenbuildingencyclopaedia.uk/?P=17699>

Module	Topic	Responsible	Status
1	Introduction to BIM	Brian Murphy	Completed
2	BIM Jargon Buster	Brian Murphy	Completed
3	BIM Periodic Table	Brian Murphy	Completed
4	Communicating Product Data	Brian Murphy	Completed
5	Sustainable Design & Manufacturer's Information	Brian Murphy	Completed
6	Specifications within BIM	Brian Murphy	Completed
7	Whole Building Calculators	Brian Murphy	Completed
8	BIM a Spec Writers Perspective	Brian Murphy	Completed
9	Specification: at what stage?	Brian Murphy	Completed
10	Specification Development RIBA Plan of Work 2013	Brian Murphy	Completed
11	National BIM Report 2013	Brian Murphy	Completed
12	Product Data Templates (PDT)	Brian Murphy	Completed
13	Digital Object Identifiers (DOI)	Brian Murphy	Completed
14	Green BIM Building Conference Leeds	Brian Murphy	Completed
15	Blockchain Timber Chain of Custody	Brian Murphy	Completed
16	EUTR EU Timber Regulations NEPCon Hub	Brian Murphy	Completed

18/03/19

9

Today's Lecture

- **Future Systems:**
ITC Technology
CAD BIM & APPs



Quotes for the Day

- CAD is not BIM BIM is not CAD
- Excel killed the development of BIM for a 40 years
 - (Paul Fletcher: “Beyond BIM” 2012)
- All the CAD software providers helped suppress it too

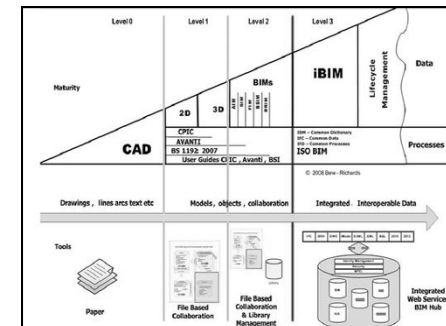
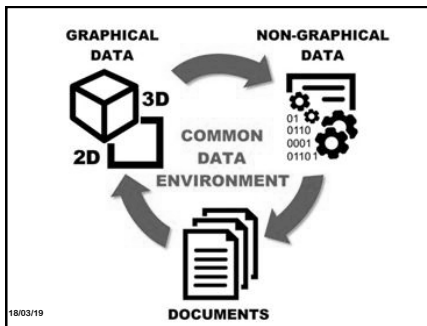


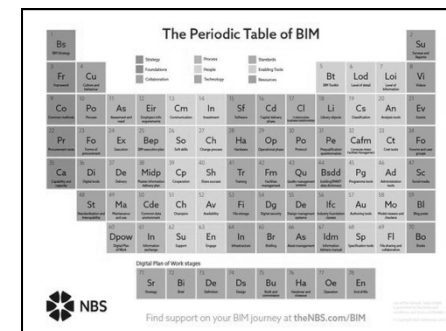
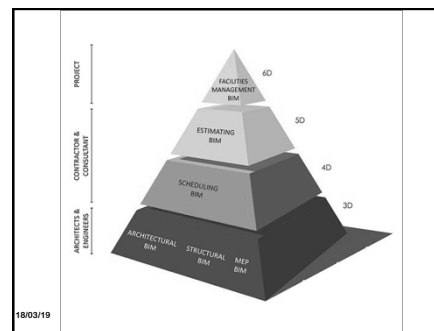
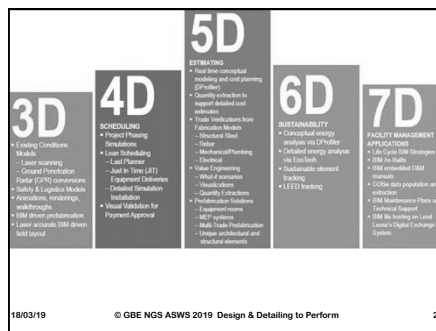
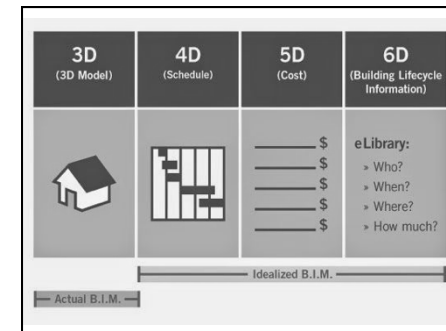
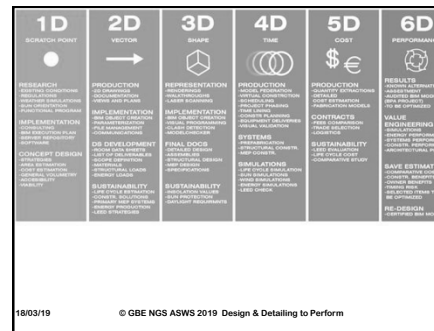
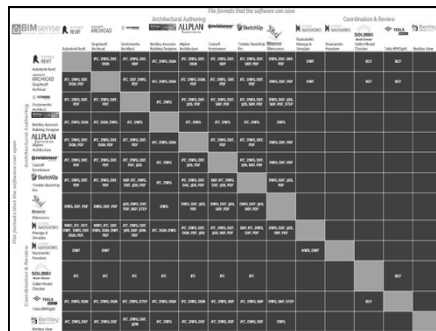
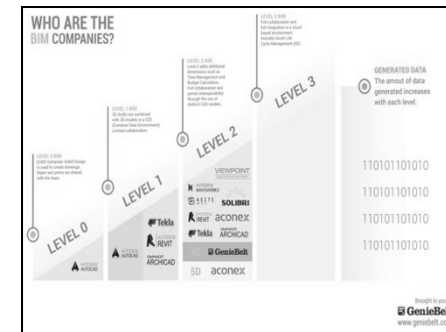
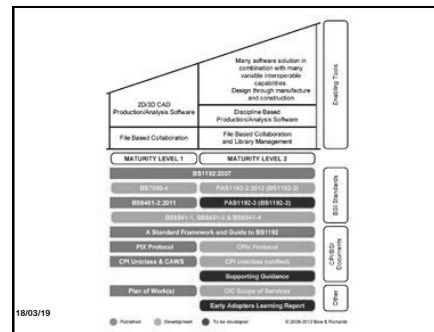
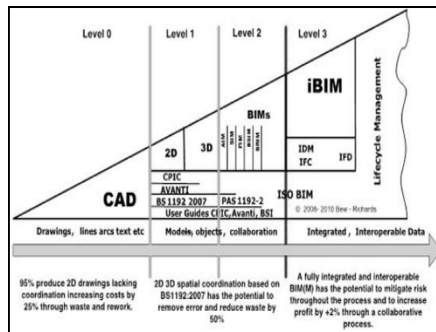
BIM Past and Future:

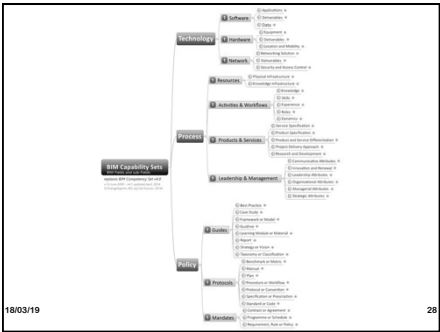
- **Jules May started programming 3D intelligent CAD**
 - Bridge Software
 - CAD companies tried to destroy his Software
 - Brian Murphy helped develop an early prototype
- **For BIM to become really intelligent:**
 - It needs current data, lots of it,
 - about products & materials
 - BOM Bills of Materials generated from BIM model
 - APPs to interrogate BOM and data:
 - Datasets + equations = calculators
 - Neither are well developed yet
 - Some will arrive when you join the profession

BIM & 2016

- **Government in a review of the state of the** construction industry decided yet again the industry competency was still not up to par
- They determined Intelligent CAD = BIM Building Information Modeling was the way forward for future Government Procurement
- 2016 was set as the threshold date by which all future projects will be delivered with BIM Level 2
- And they want to see 10% price reductions year on year







18/03/19

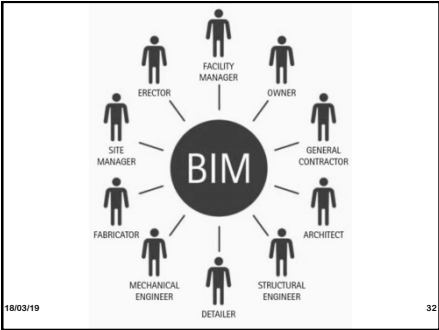
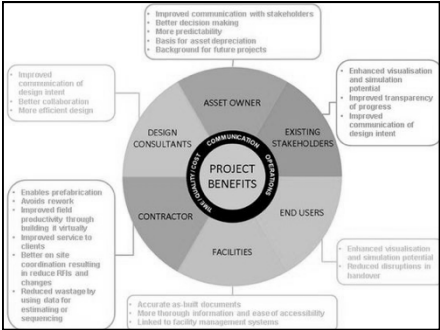
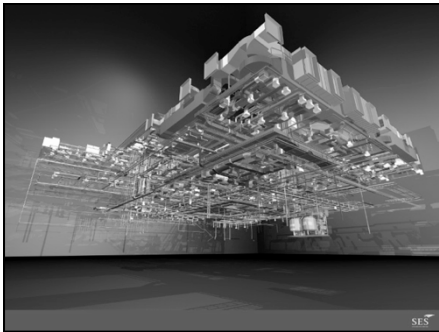
28



18/03/19

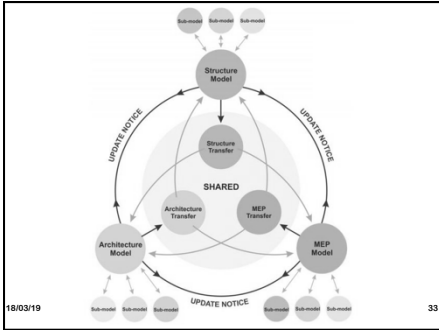
© GBE NGS ASWS 2019 Design & Detailing to Perform

29



18/03/19

32



18/03/19

33

Professional Responsibility

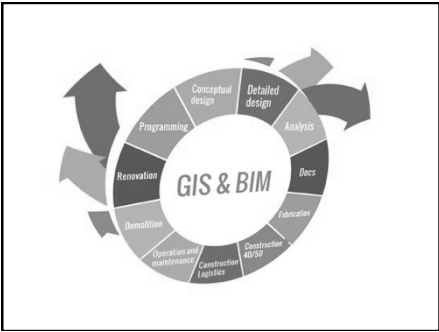
- Shared data in shared environment:
 - Aim is to resolve issues/clashes and coordinate all disciplines outputs before site
 - But is there a risk of blurred responsibility boundaries?
 - Can you see who is responsible?
 - Needs to carry a time line against all actions
 - Can you extract yourself from the firing line when things go wrong, despite all efforts

ACA
ASSOCIATION OF
CONSULTANT ARCHITECTS

18/03/19

ACA Newsletter discussed this at length

34



PLAN	DESIGN	CONSTRUCT	OPERATE
Existing Conditions Modeling			
Cost Estimation			
Phase Planning			
Programming			
Site Analysis			
Design	Reviews		
	Design Authoring		
	Structural Analysis		
	Lighting Analysis		
	Energy Analysis		
	Mechanical Analysis		
	Other Eng. Analysis		
	LEED Evaluation		
	Code Validation		
	3D Coordination		
	Site Utilization Planning		
	Construction System Design		
	Digital Fabrication		
	3D Control and Planning		
	Record Model		
		Maintenance Scheduling	
		Building System Analysis	
		Asset Management	
		Space Mgmt/Tracking	
		Disaster Planning	

RIBA 16

	0	1	2	3	4	5	6	7	8	9
	0	1	2	3	4	5	6	7	8	9
0										
1										
2										
3										
4										
5										
6										
7										
8										
9										

18/03/19 © GBE NGS ASWS 2019 Design & Detailing to Perform 37

RIBA Plan of Work 2013

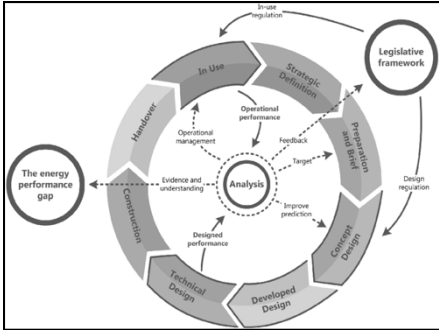
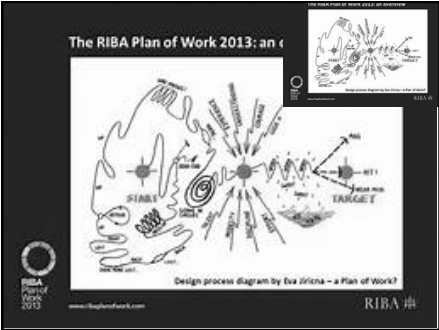
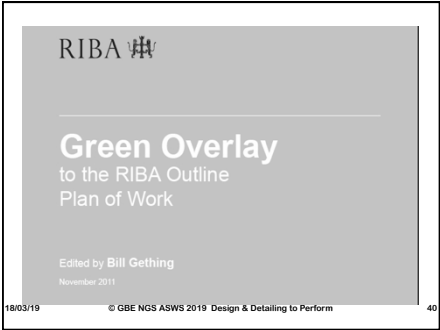
	1	2	3	4	5	6	7
	1	2	3	4	5	6	7
1							
2							
3							
4							
5							
6							
7							

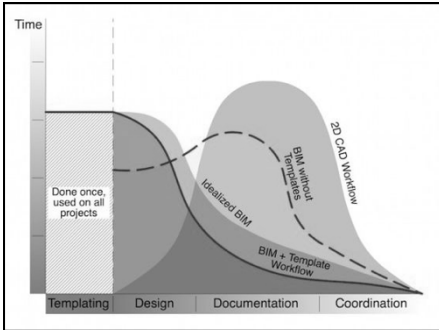
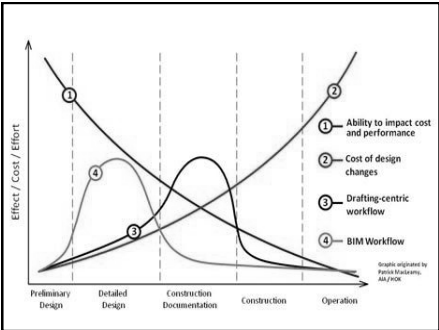
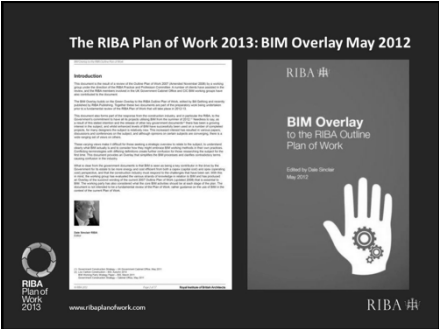
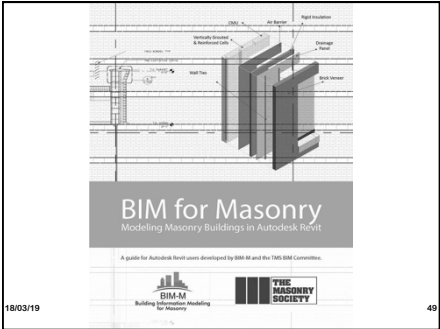
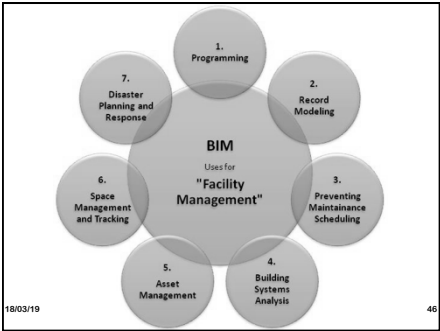
18/03/19 © RIBA 2012

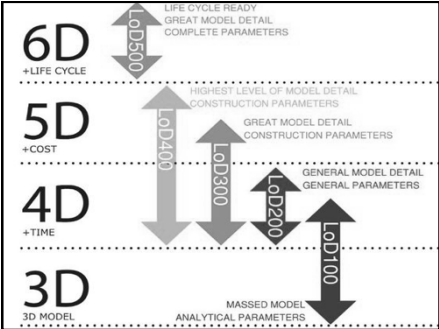
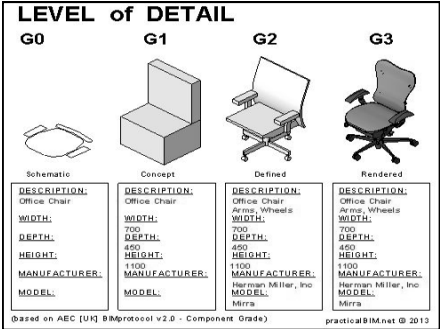
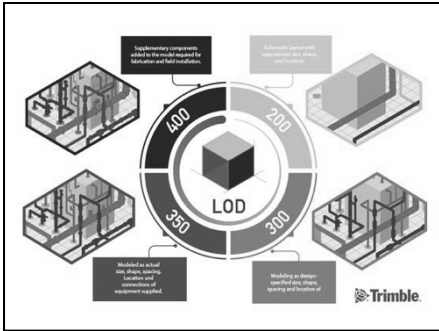
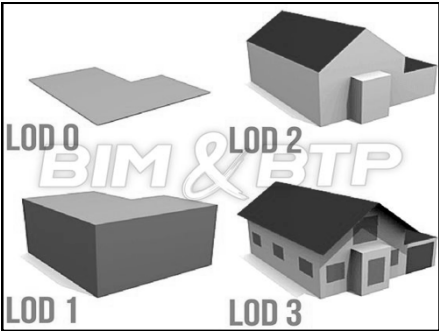
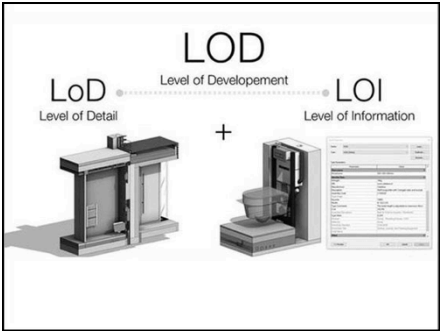
RIBA Plan of Work 2013

	1	2	3	4	5	6	7
	1	2	3	4	5	6	7
1							
2							
3							
4							
5							
6							
7							

18/03/19 Figure 1: Mapping the new Plan of Work, and alignment with the current proposed CIC stages 39







Level of Detail	Level of Development	Level of Information	Level of Detail	Level of Development	Level of Information
G0	G1	G2	G3	G4	G5
Schematic	Concept	Defined	Rendered	As-Built	As-Used
DESCRIPTION: Office Chair	DESCRIPTION: Office Chair	DESCRIPTION: Office Chair	DESCRIPTION: Office Chair	DESCRIPTION: Office Chair	DESCRIPTION: Office Chair
WIDTH: 700	WIDTH: 700	WIDTH: 700	WIDTH: 700	WIDTH: 700	WIDTH: 700
DEPTH: 400	DEPTH: 400	DEPTH: 400	DEPTH: 400	DEPTH: 400	DEPTH: 400
HEIGHT: 1100	HEIGHT: 1100	HEIGHT: 1100	HEIGHT: 1100	HEIGHT: 1100	HEIGHT: 1100
MANUFACTURER: Herman Miller, Inc	MANUFACTURER: Herman Miller, Inc	MANUFACTURER: Herman Miller, Inc	MANUFACTURER: Herman Miller, Inc	MANUFACTURER: Herman Miller, Inc	MANUFACTURER: Herman Miller, Inc
MODEL: Mirra	MODEL: Mirra	MODEL: Mirra	MODEL: Mirra	MODEL: Mirra	MODEL: Mirra

Level of Detail	Level of Development	Level of Information	Level of Detail	Level of Development	Level of Information
G0	G1	G2	G3	G4	G5
Schematic	Concept	Defined	Rendered	As-Built	As-Used
DESCRIPTION: Office Chair	DESCRIPTION: Office Chair	DESCRIPTION: Office Chair	DESCRIPTION: Office Chair	DESCRIPTION: Office Chair	DESCRIPTION: Office Chair
WIDTH: 700	WIDTH: 700	WIDTH: 700	WIDTH: 700	WIDTH: 700	WIDTH: 700
DEPTH: 400	DEPTH: 400	DEPTH: 400	DEPTH: 400	DEPTH: 400	DEPTH: 400
HEIGHT: 1100	HEIGHT: 1100	HEIGHT: 1100	HEIGHT: 1100	HEIGHT: 1100	HEIGHT: 1100
MANUFACTURER: Herman Miller, Inc	MANUFACTURER: Herman Miller, Inc	MANUFACTURER: Herman Miller, Inc	MANUFACTURER: Herman Miller, Inc	MANUFACTURER: Herman Miller, Inc	MANUFACTURER: Herman Miller, Inc
MODEL: Mirra	MODEL: Mirra	MODEL: Mirra	MODEL: Mirra	MODEL: Mirra	MODEL: Mirra

Level of Detail	Level of Development	Level of Information	Level of Detail	Level of Development	Level of Information
G0	G1	G2	G3	G4	G5
Schematic	Concept	Defined	Rendered	As-Built	As-Used
DESCRIPTION: Office Chair	DESCRIPTION: Office Chair	DESCRIPTION: Office Chair	DESCRIPTION: Office Chair	DESCRIPTION: Office Chair	DESCRIPTION: Office Chair
WIDTH: 700	WIDTH: 700	WIDTH: 700	WIDTH: 700	WIDTH: 700	WIDTH: 700
DEPTH: 400	DEPTH: 400	DEPTH: 400	DEPTH: 400	DEPTH: 400	DEPTH: 400
HEIGHT: 1100	HEIGHT: 1100	HEIGHT: 1100	HEIGHT: 1100	HEIGHT: 1100	HEIGHT: 1100
MANUFACTURER: Herman Miller, Inc	MANUFACTURER: Herman Miller, Inc	MANUFACTURER: Herman Miller, Inc	MANUFACTURER: Herman Miller, Inc	MANUFACTURER: Herman Miller, Inc	MANUFACTURER: Herman Miller, Inc
MODEL: Mirra	MODEL: Mirra	MODEL: Mirra	MODEL: Mirra	MODEL: Mirra	MODEL: Mirra

Climate change	0.00E+00	kg CO2 eq	Human health	0.00E+00
Global warming	0.00E+00	kg CO2-Eq 1	Resources	0.00E+00
Human toxicity, cancer effects	0.00E+00	CTuH		
Human toxicity, non-cancer effects	0.00E+00	CTuH		
Particulate matter	0.00E+00	PM10-Eq		
Ionizing radiation HI	0.00E+00	kg I235-Eq		
Ionizing radiation E	0.00E+00	kg I235-Eq		
Photochemical ozone formation	0.00E+00	kg PM10-Eq		
Acidification	0.00E+00	mgH2O-Eq		
Terrestrial eutrophication	0.00E+00	mgN-Eq		
Freshwater eutrophication	0.00E+00	mgP-Eq		
Marine eutrophication	0.00E+00	mgN-Eq		
Freshwater ecotoxicity	0.00E+00	mgN-Eq		
Land use	0.00E+00	kg Defect		
Water resource depletion	0.00E+00	kg H2O-Eq		
Cumulative energy demand	0.00E+00	MJ		

18/03/19

© GBE NGS ASWS 2019 Design & Detailing to Perform

64

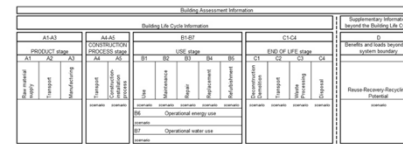


Figure 1: Life cycle stages and modules used in CEN/TC 350 standards such as EN 15804

18/03/19

© GBE NGS ASWS 2019 Design & Detailing to Perform

65

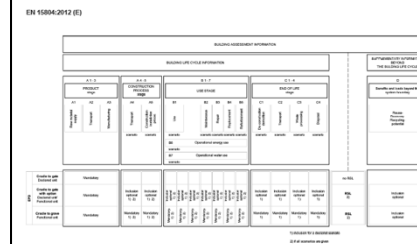
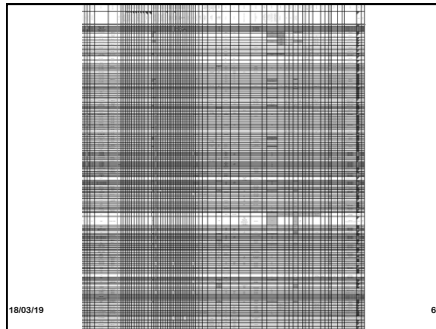


Figure 1 —Types of EFO with respect to life cycle stages covered

18/03/19

© GBE NGS ASWS 2019 Design & Detailing to Perform

66



18/03/19

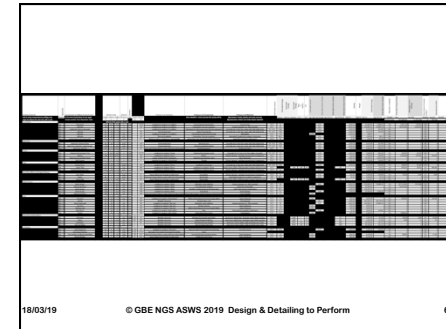
67

[illegible]

18/03/19

© GBE NGS ASWS 2019 Design & Detailing to Perform

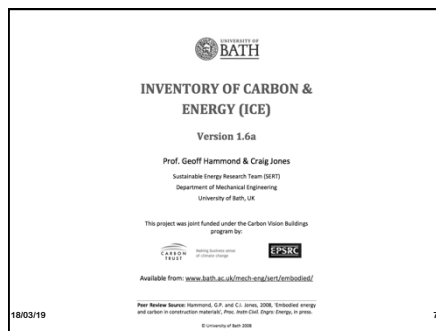
68



18/03/19

© GBE NGS ASWS 2019 Design & Detailing to Perform

69



18/03/19

70

Interoperability and Integration

- The success of Applications to work with each other is to release the code of one to developers of the other, so they can interrogate it and write code to interoperate seamlessly with each other then test it and have on line updating
- Plugins and Apps become a doddle to load and start using
- All existing building analysis applications must migrate towards BIM APPs so there is no or little file transferring or translating, between applications

Built2SpecProject

- EU funded Project
- Avoiding compromise in specification without accountability
- Accountability through Smart Phone
 - All decisions makers recorded against all actions/decisions made
 - All decision points known in advance through templates built from specification review/approval sign off clauses out of NBS Create software
 - Approving: Prototypes, Samples, Mock ups, Control samples
 - Responding to: RFI Requests for Information
 - Recording: works completed
 - Recording: snagging points

18/03/19

72

